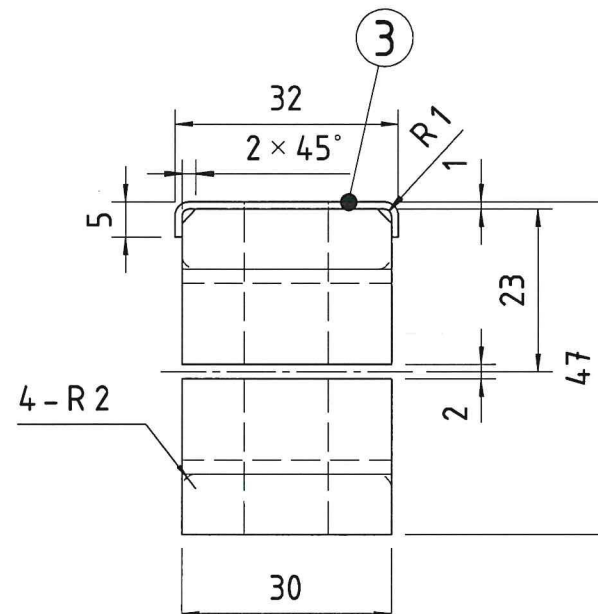
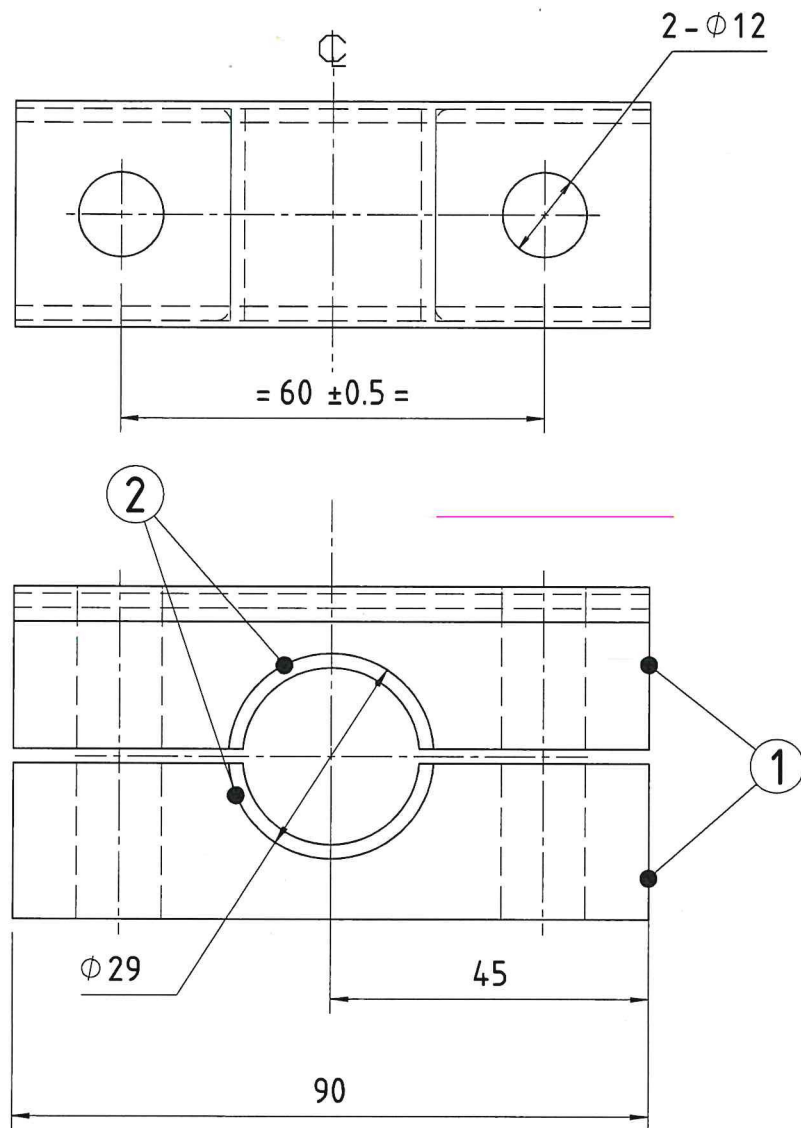


COPY RIGHT & CONFIDENTIAL
THIS DOCUMENT IS THE EXCLUSIVE PROPERTY OF BEML & CONTAINS CONFIDENTIAL INFORMATION. THIS DOCUMENT OR ITS CONTENTS SHALL NOT BE USED, REPRODUCED OR DISCLOSED IN WHOLE OR IN PART, WITHOUT PRIOR WRITTEN PERMISSION OF BEML. THIS DOCUMENT & ALL ITS COPIES SHALL BE RETURNED TO BEML ON DEMAND
DRAWING RELEASED FROM PLM, PHYSICAL SIGNATURE NOT REQUIRED

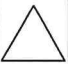


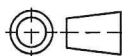

GRADE No.	VALUE	SYMBOL
N1	0.025	▽
N2	0.05	▽
N3	0.1	▽
N4	0.2	▽
N5	0.4	▽
N6	0.8	▽
N7	1.6	▽
N8	3.2	▽
N9	6.3	▽
N10	12.5	▽
N11	25	▽
N12	50	▽
ROUGHNESS		

NOTES:

1. REMOVE ALL SHARP EDGES AND BURRS.
2. CLEAT SHALL BE FIRE RETARDANT TO V-0 GRADE OF UL-94.



UN CONTROLLED COPY

3	1		PLATE	90x38x1THK	AISI 304		
2	2		RUBBER, PROTECTOR	42x30x2THK	EPDM		
1	1 SET		CLEAT	90x30x22	NYLON 6		
SL.No.	QTY	PART / STOCK No.	DESCRIPTION	SIZE (mm)	COMPANY STD./I.S	Wt. (Kg)	
					MATERIAL		
			PRODUCT	BMRCL METRO CARS			
			REF DRG				
			MATERIAL				
			HEAT TREAT.	APPD	MS	21.08.19	
			SURFACE TREAT.	REVD	DB	19.08.19	
			TITLE	CHKD	JC	17.08.19	
			CLEAT ASS'Y , EARTH A & B	DRWN	ILYAS		
				SCALE		SHEET	Wt.(kg)
				1:1		1 OF 1	0.1
ALT.No.	ECN NO/CHANGES	DATE	BY	CHKD	APPD	DRG No.	
				 BEM LIMITED		926-81017	
						ALT	
						